

PURE MICHIGAN®
SmartZone™ Midland

The Midland SmartZone™ is a new, dynamic partnership aligning and focusing the region's economic development functions to drive economic growth and promote diversification. The partnership builds upon Midland County's internationally recognized knowledge in the specialty chemicals and advanced materials sectors. Three key stakeholders of the SmartZone are: Midland Tomorrow, Michigan Molecular Institute (MMI), and the MidMichigan Innovation Center. There is also support from The Dow Chemical Company, Dow Corning Corporation and Midland County's philanthropic foundations. The SmartZone has been approved by the Michigan Economic Development Corporation.



For the past 50 years, Midland Tomorrow has been enhancing the quality of life for Midland County residents through retention and creation of quality jobs and diversification of the economic base. If you are a technology company, advanced material manufacturer, or a start-up company, Midland Tomorrow will ensure conditions are met for your business to grow and thrive in Midland County. Whether it be developing ready-to-build industrial sites, resolving environmental issues, or being the voice-of-business at the state and national level, we want the Midland area to be top of mind.

Midland Tomorrow can confidentially assist you free of charge, no matter what stage of business you are in. Contact us today!

New Construction
Underway for Midland

Currently under construction is a new 30,000 square-foot, two-story office building located in downtown Midland at 409 Ashman Street; the block is bounded by Indian, Buttles, Gordon and Ashman Streets. This new state-of-the-art facility features a granite and stone façade with high-efficiency glazing affording all spaces with ample natural daylight. The energy-conscious building systems designs are complemented by a high-efficiency building envelope constructed utilizing Dow Building Solutions products.

The new building will be owned and operated by SSP Associates, a Shaheen Development company which has created places for living, working, leisure and healthcare for more than four decades. Styron will occupy the second floor with approximately 40 employees in customer service, feedstocks, finance, purchasing and supply chain. The first floor will house two additional tenants.

This new project is an exciting addition to the many other developments already taking place in downtown Midland.

300 Rodd Street, Suite 201
Midland, MI 48640
(989) 839-0340
www.midlandtomorrow.org
marketing@midlandtomorrow.org



Interested in Midland?
Tour it virtually at
www.tourmidland.com

Cover picture: New Styron™ building. Courtesy of SSP Associates.

Panel picture (below): "Sunset Over Sanford Lake." Courtesy of Sue LaBonville, president of Allis Information Management, Inc.

ER4.3

Volume 4, Issue 2
MIDLAND
ECONOMIC
REPORT



MIDLAND 50th
TOMORROW ANNIVERSARY
An Economic Catalyst Since 1963

SUMMER 2013

www.midlandtomorrow.org



www.midlandtomorrow.org

MIDLAND 50th
TOMORROW ANNIVERSARY
An Economic Catalyst Since 1963

SUMMER 2013

Volume 4, Issue 2
MIDLAND
ECONOMIC
REPORT

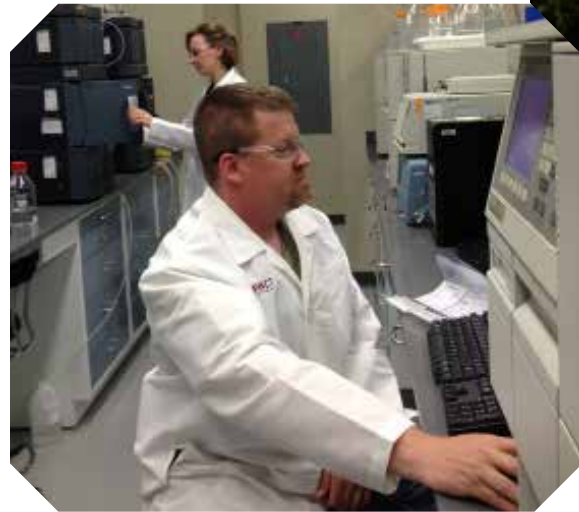
Impact Analytical Innovation in Midland



Impact Analytical, a fast-growing service organization that offers full, comprehensive analytical services to more than 300 companies worldwide, recently celebrated a significant milestone move to a new 17,000 square-foot facility within Midland County. Impact Analytical is a division of Michigan Molecular Institute and its mission is to deliver industry-leading analytical testing services that meet the customer's expectations in every way. Its customers span across many industries, such as pharmaceutical, plastics, medical devices, packaging, consumer products, automotive and specialty chemicals.

The new facility creates world class laboratory space tailored specifically to meeting the needs of the customer by enhancing efficiency, safety and standardization. The facility also allows for additional expansion in the future and will house more than 35 scientists. Impact Analytical expects to add additional employees in the next three years. Its operation of more than 80 instruments is designed to provide the very best in elemental analysis, microscopy, molecular characterization, gas separations, liquid separations and thermal/mechanical properties.

Midland County is truly a central hub for the advanced chemical sector; and a supportive community of Impact Analytical, as it truly is a key resource for innovators around the world. If you want to learn more, visit Impact Analytical's website at: www.impactanalytical.com, where you will find a wealth of information from case studies to technical white papers and more.



LMS Global and Growing



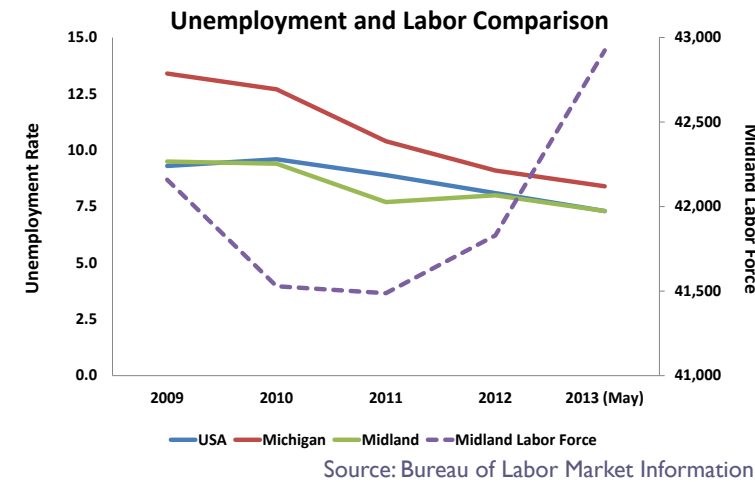
LMS is a Midland-based division specializing in elastomeric assemblies for fluid flow applications. As a specialty center division of AptarGroup, Inc., LMS manufactures elastomeric valves, seals, and other fluid-flow products for a wide range of fluid management systems. Its global strategic markets include medical devices, health and wellness products, food service products and packaging.



In 2003, LMS had 75 employees and told the Midland Economic Development Council (now Midland Tomorrow) that it expected to reach 90 within five years. As of May 2013, LMS proved tremendous growth, reaching 134 full-time employees as well as 102 temporary manufacturing employees. LMS's growth in its molded silicone valve business has resulted in the cumulative molding of over 20 billion to date at its plant in Midland. Its revolutionary SimpliSqueeze® valve is a global market leader for valve closures and can be found on a variety of food and health products.

With the support of Midland Tomorrow in 2003, LMS relocated to its current building and received assistance with tax abatement. LMS is positioned for continued growth, and is partnering with Midland Tomorrow to evaluate options for expansion.

Midland by the Numbers The Economy at a Glance



Local Project Updates

Coleman Veterans Memorial: Honoring the Brave

The Coleman Veterans Memorial pays tribute to those brave men and women who have served our nation with honor. Near the Coleman Library along Railway Street, the memorial is located in a courtyard containing sculptures, benches, three walkways and brick pavers that friends and family members purchased and customized in memory of their lost loved ones.

In collaboration among the City of Coleman, the 25th Infantry Memorial Fund and many other donating foundations, the first phase of the memorial was built in only one year. The newest addition to the memorial, however, is a statue representing a female combat soldier fighting against the global war on terror. She was erected and dedicated on Memorial Day this year. It is believed to be the first full-sized statue of a servicewoman in the United States. The new theme for the memorial in 2013 now focuses on Women of the Military.

The Herbert H. and Grace A. Dow Foundation President Margaret Ann (Ranny) Riecker acknowledged it was the Coleman community's tremendous financial support for this project which led to the Trustees' decision to award a grant.

"Of course we wanted to participate. It is truly community building," Riecker said.

Financial contributions can be made to the City of Coleman; however, the Coleman Veterans Memorial Committee is applying for its own 501(c)(3) nonprofit designation.



To-Dos This Summer What the Midland Community Offers

The warm, outdoor season has arrived in Michigan, and there is no better place to visit than one of the many recreational attractions located within Midland County. The abundance of natural beauty showcasing the region's unique natural resources are sure to enhance the lives of their visitors. If you're a nature enthusiast, there are many spots you need to visit. Be sure to check out Sanford Lake Park with their Turtle Tides Spray Playground and Dow Gardens, the 110-acre botanical garden with walking trails. There are many more: The Chippewa Nature Center, Whiting Forest, Dahlia Hill, Midland City Forest, the Tridge and the Pere Marquette Rail-Trail, which stretches for 30 miles throughout Midland County, Pine Haven Recreation Area, 325 acres of diverse terrain, Veterans Memorial Park and more than 70 other parks! For the sports enthusiasts, Midland County offers tennis, softball, baseball, hiking, cycling, volleyball, hockey, golf and more! We're also the home of the Great Lakes Loons, a class-A minor league baseball team that plays at Dow Diamond, located at the East End of downtown Midland. For more information about our amazing community, visit: www.midland-mi.org.

MidMichigan Health Makes a Healthy Move



MidMichigan Health, the non-profit health system headquartered in Midland that serves a 14-county region in the middle of Michigan, signed an affiliation agreement with the University of Michigan Health System (UMHS) on June 21. A national leader in advanced patient care, innovative research, and the training of physicians and medical scientists, UMHS is known worldwide for world-class care. The affiliation allows for MidMichigan to strengthen its ability to serve patients

and communities, while giving them easier access to the advanced care and expertise available

"Through this affiliation, the University of Michigan Health System and MidMichigan Health will further the delivery of high quality health care to residents in our region," said Diane Postler-Slatery, Ph.D, MidMichigan Health president and chief executive officer.

Learn more about the affiliation at: www.midmichigan.org.

